



# Spotlight on Success

## District Literacy Coaches Corner

As literacy coaches, it is our goal to support teachers in helping their students become literate. Writing instruction is a strategy for increasing reading ability because reading and writing are reciprocal. One way to address time constraints is to integrate HM into the writing program.

In the upper grade classroom you could take the essential standard that you are teaching and instead of following the script from the TE or using a practice book page incorporate that standard into the writing lesson. For example, if your comprehension strategy is main idea teach a WFTB mini-lesson on main idea. You could also reverse map a story on a flee map to pull the main idea and details from the reading selection. As this year's district focus is on reading comprehension and writing strategies, this integration is a meaningful and time efficient way to address this issue.

In the primary classroom, some beginning readers only become aware of the true power of the alphabetic system when they start to write. For these students writing is the vehicle through which they learn to read.

Another powerful reason to make writing a primary approach for literacy instruction is that it will accelerate progress for our

ELLs. It is interesting to note that in the book When English Language Learners Write (2006), Katherine Davies Samway points out (speaking of ELL students) "opportunities to talk about their writing, both while writing and at the end of a writing occasion are invaluable". Are your students talking about their writing, sharing their writing—not only with you, but also with each other? Are they collaborating and writing group pieces? Have you shared the writing rubric with them?

Last year Bellevue District fully implemented Write From the Beginning. Both of us are trained facilitators for this program. One way to engage in coaching is through the Lesson Study process and this fall we will begin facilitating Lesson Study groups with writing as the focus. If you prefer, we can also plan and co-teach a lesson with you, model a lesson or be an "extra pair of eyes" while you teach. (Friendly reminder: our relationship with you is non-evaluative and confidential.)

We are colleagues, fellow teachers-not experts. One of the great joys in our role is the opportunity to visit many classrooms in the district, and by doing so we are able to

*Con't on Page 3*

## Facilities Bond: Measure J on Nov Ballot

The Bellevue Union School district has placed a facilities bond on the November 4 general election ballot. The bond, known as Measure J, asks voters to approve \$19 million dollars to construct new facilities at Taylor Mountain, expand the Meadow View campus, and to modernize Bellevue and Kawana schools.

If approved, homes and businesses would have their property taxes increased by \$19 per one hundred thousand dollars of assessed value. This means a home assessed at \$300,000 would see their property taxes increase by \$57 per year.

A poll of voters conducted last year showed such a request would receive support from our community.

A fact sheet concerning Measure J can be found at each school site. The fact sheet is available in English and Spanish. The fact sheet is also posted on our website at [www.bellevueusd.org](http://www.bellevueusd.org).



*Aline Newport, a longtime active Bellevue community member, volunteered her time to call registered voters about Measure J.*

### Inside this Issue:

District Math Coaches Corner	2
School's Round-Up	2
Math Textbook Adoption	3
November/December Calendar	4

# District Curriculum Coaches Corner: Math

---

A unique offer is being extended to teachers in the Bellevue District; a coaching opportunity in mathematics with a twist. While most coaching models focus attention on the teacher and what the teacher will do, this model will focus attention on the students and what they will do. While many coaching models attempt to “show” teachers how to teach better via demo lessons this model will take our core, state-adopted mathematics

curriculum and help teachers implement student-centered techniques that will attempt to facilitate changes in student thinking and increases in their academic performance.

At the heart of this model is the axiom that “the one doing the talking and thinking, is the one doing the learning”. Another aspect that is essential to this model is that as teachers we cannot just be “text book presenters”. Teachers must be fa-

cilitators of learning and that can only be accomplished by:

- listening carefully to students
- understanding what they know and what misunderstandings they have
- Asking carefully crafted questions
- Allowing students to become an active and essential component of the lesson

*Con't on Page 3*

## School's Round-up: What's Going on at our Campuses

---

### Bellevue Happenings

Many staff members participated in the training in ELD and math offered during the District Buy-Back day on Saturday October 4<sup>th</sup>. This was an excellent opportunity to work with other teachers and plan training for our students learning English. Staff and student Safe School Ambassadors completed their second day of training today. Bellevue was very fortunate to be able to participate in this program. Bellevue's School Site Council met on October 20 with the other Site Council's from the District. The focus of the meeting was a preliminary budget analysis for Title I funding during the 2009-2010 academic year.

The Sixth Grade students had a memorable experience at outdoor education on 6 – 8 October. Temperatures on Thursday night dipped into the mid – 40s leading to many cold students. It was surprising to see the number of menu variations possible using left- over turkey burgers from the Health and Wellness Festival.

The 2<sup>nd</sup> Annual Health and Wellness Festival was well attended. A special thanks goes out to the District's CalSERVES Mentors for their amazing support of this event. The dental screening of Kindergarten and 1st Grade students on October 10<sup>th</sup> was a success. While volunteers examined students, the others had an opportunity to learn about dental hygiene and good eating habits. Pasitos – our toddler program – sponsored by Community Action Partnership began on October 16<sup>th</sup>. This program, for children and parents, gives our future students a jump start on literacy skills. Bellevue Cool

School Program held an evening dedicated to Dr. Seuss on October 15<sup>th</sup>. The theme was “Oh The Places We'll Go” featuring reading and dramatic presentations by students and CalSERVES mentors. This event, part of the National Lights On Night, was well attended by parents and students.

### Kawana Update

Dental Screening occurred on site for all Kinders and 1<sup>st</sup> grades at Kawana on 9/29. Kawana Leadership met with District Leadership teams at SCOE on 10/3; we reviewed PLC protocols. The Kawana Math Adoption Team was training at SCOE on 10/6.

Walk 7 Roll to School was a tremendous success at Kawana on 10/8. There was an early assembly with Vice Mayor Gorin and other dignitaries. On Friday bicycles were raffled off to lucky participants in the Walk & Roll.

Instructional Tours have started again, staff are assisting with the Tour protocols. PLC's are continuing, the staff met last Wednesday and prepared a PLC schedule specific to Kawana's needs.

The FFA provided Kawana students with a Petting Zoo on Thursday, the 16<sup>th</sup>. Safe Routes to School and Neighborhood Watch both held meeting at Kawana last night. Kawana hosted volunteers on Saturday, the 25<sup>th</sup>, during Hands Across the County Day. Kindergarten Teachers will be meeting at SCOE on Monday, the 27<sup>th</sup>. 1st Grade teachers, the day after and 2<sup>nd</sup> grade on the 30<sup>th</sup>. Kawana held its first Literacy Night on 10/29.

Kawana's SSC has elected a full committee consisting of 5 staff members and five parents/community members. The SSC wanted to continue funding the position vacated by the Title 1 Reading teacher. Some of the members attended a special budget meeting on 10/20 at the DO.

Kawana's PTA met on 10/9. They looked at fund raising possibilities and decided that the main push would be to raise money for a new Kindergarten play area. They would also devote fund raising for educational assemblies and providing parent education events as well. PTA will host a Bingo night at Kawana this Friday. There is also a plan to have a Movie Night on 11/21.

### What's New at Meadow View

The Meadow View PTA met on September 29<sup>th</sup> to discuss plans for its annual Halloween Carnival, held on Friday, October 24<sup>th</sup>. On September 19<sup>th</sup>, the PTA sponsored a Fiesta Night featuring chicken and carne asada tacos. The PTA also held our first Family Fun of the year at Cal Skate on October 10<sup>th</sup>.

Our School Site Council met on October 6<sup>th</sup> and began reviewing our Single Plan for Student Achievement. Members attended a training at CTA on October 24<sup>th</sup> as well as a presentation by the District on October 20<sup>th</sup>. A timeline was designed to schedule a complete review of the Single Plan and all programs by December in order for our Plan to be reviewed, revised and presented to the Board for its approval in January, 2009.

*Con't on page 4*

# New Mathematics Textbooks for Bellevue District Students

---

Members of the district math adoption committee spent two days at SCOE reviewing and analyzing eight new math programs. The committee looked at the programs in terms of the mathematical content, the instructional delivery, assessment and access for all students. In addition, the committee outlined five criteria they felt each program must address in order for it to meet the needs of students in the Bellevue District:

- Manipulatives/hands-on activities
- Extensive support for all students
- Less paper and pencil tasks
- Builds vocabulary
- Built in opportunities for students to explain their thinking

With the criteria in mind, questions were developed to use when reviewing programs:

- Are the students doing the thinking?
- Are there teacher prompts for discourse?
- Is there support for English Learners?
- Will the materials integrate with the pathways?
- Is there differentiation for students-Gate? EL? Intervention?

Part two of our textbook study was to conduct a standards sampling using the mathematical idea of equality. The committee began with taped interviews of Bellevue students responding to questions about equality taken from the Cognitively Guided Instruction research. The questions asked students to define equality to compare the ideas of equality as a signal for an answer, and equality as “the same as” or equivalence. Standards chosen for the review can from the Expressions and Equations Pathway developed by the district. Teachers evaluated each program by 1 = Does not meet district needs, 2 = Meets the district needs, 3 = Exemplary. The mode was reported by grade level, the results tabulated and the top four programs were selected for further evaluation.

The committee then reviewed the remaining four programs through the lens of the district questions listing the positives and

negatives for each program. After this occurred two more programs were eliminated by consensus. Each teacher on the committee will teach and evaluate lessons from each of the two remaining programs, MacMillian/McGraw Hill and Pearson/Scott Foresman to alleviate bias. Other district teachers are invited to test and/or evaluate the lessons. The adoption committee will convene on December 9<sup>th</sup> to evaluate the collected data, to come to consensus, and to make a recommendation to the superintendent selecting one program for adoption by the board at their December meeting.

More news from the curriculum department----

**GATE** after-school seminars are extremely popular. Thirty to forty students are participating in most seminars. A call has gone out to district teachers interested in teaching a seminar beginning the first

of December. If you are interested, please contact Susie Hirsch, in writing, at the district office.

**Grade Level Collaboration** release days will begin the last of October and will run through November 7<sup>th</sup>. Teachers will meet in grade level teams to finalize essential standards for language arts, review and/or revise current and upcoming theme skills test and begin the process of identifying which essential standards will become the focus for selections in the next theme. It has been a long time coming, but by the end of this school year the district will have a systematic, comprehensive math and language arts assessment in place which will guide teachers in identifying struggling students and developing appropriate interventions in order to ensure the academic success for all district students.

*-Paula Sutherland, Director Curriculum*

## Mathematics Coaches Corner

---

Lessons will be designed by both the coach and the classroom teacher and/or the grade level team. These lessons will follow the math pathway for the grade level and utilize our core mathematics curriculum. The lessons will emphasize student discourse including student explanations and justifications. The lessons will also emphasize student representations of mathematics situations and presentations of their possible solutions.

Logistically, the coaching cycle will be a week-long sequence of lessons by the coach followed by a week of lessons by the teacher(s). The underlying premise of the coaching model is to effect change in the mathematics classroom thus the extended time for the teacher to observe the lessons and the students and to provide a safe environment for exploration of new techniques or practice.

This process will not be easy. Our mathematics classrooms tend to reflect our response to federal and state mandates for assessment and pacing. This coaching model will attempt to refocus our efforts

to pace the curriculum for learning and to effectively use assessments to inform us about student understandings and misconceptions.

As schedules are formed and the coaching opportunity is offered at your school, please consider participating either individually or as a grade level team. It will be a powerful addition to our repertoire of teaching tools and a powerful force driving increased student achievement.

*-David Chosa, Math Coach*

## Literacy Coaches

---

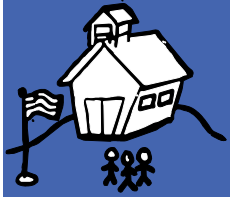
‘spread the wealth’ by sharing the great ideas and strategies of our brilliant staff.

We’re here to support you in any way we can to achieve the common goal of seeing our students soar to success. You can reach us via district email or put a note in one of our boxes.

*-Ellen Fryer and Lonna Mulkey,  
Literacy Coaches*

## November/December, 2008

---



### BELLEVUE UNION SCHOOL DISTRICT

3223 Primrose Avenue  
Santa Rosa, CA 95403  
707-542-5197

Bellevue School 707-542-5195  
Kawana School 707-545-4283  
Meadow View School 707-541-3715  
Taylor Mountain School 707-542-3671

### *Success for All*

Have a suggestion for a future article or feature? Please contact Marie White at the district office with your suggestions.

Tuesday, November 4	3rd Grade Collaboration Day #1
Tuesday, November 4	GATE Advisory, Bellevue, 7:00 p.m.
Wednesday, November 5	PLC: 2nd Hour is Teacher Directed
Thursday, November 6	4th Grade Collaboration Day #1
Thursday, November 6	Steering Committee, Bellevue, 3:30 p.m.
Friday, November 7	5th/6th Grade Collaboration Day #1
Monday, November 10	DELAC, Bellevue, 6:30 p.m.
Tuesday, November 11	Veteran's Day Holiday, No School
Wednesday, November 12	PLC: 2nd Hour is District Directed
Thursday, November 13	Intervention Committee, Bellevue, 3:30 p.m.
Monday, November 17	MAA 2nd Quarter Survey Begins
Monday, November 17	End of 1st Trimester
Tuesday, November 18	Board Meeting, Kawana, 7:00 p.m.
Wednesday, November 19	PLC: 2nd Hour is Teacher Directed
Thursday, November 20	Assessment Committee, Bellevue, 3:30 p.m.
November 26-28	Thanksgiving Holiday Break, No School
Wednesday, December 3	PLC: 2nd Hour is Site Directed
Thursday, December 4	Steering Committee, Bellevue, 3:30 p.m.
Wednesday, December 10	PLC: 2nd Hour is Teacher Directed
Thursday, December 11	Intervention Committee, Bellevue, 3:30 p.m.
Tuesday, December 16	Board Meeting, Meadow View, 7:00 p.m.
Wednesday, December 17	PLC: 2nd Hour is District Directed
Thursday, December 18	Assessment Committee, Bellevue, 3:30 p.m.
December 23-January 2	Winter Break Holidays, No School

## School Round-up: What's Going On...

---

*con't from page 2*

We have re-implemented our Action Walks, this year called Instructional Tours. Each week staff members sign up to accompany the principal on these Tours to observe student learning and best teaching practices.

On October 15<sup>th</sup>, our Literacy Coach, Lonna Mulkey and our Reading Specialists, Kim Kunkel and Kem Perreau, along with our CalServes mentors hosted our first Family Literacy Night. CalServes provided a free pasta dinner for all present. Over 75 people attended to make the night very successful. All students went away with a free book. Our library was open for our Book Faire. Our computer lab was also opened that evening. On October 7<sup>th</sup>, Meadow View staff along with District personnel called regis-

ters voters in connection with promoting Measure J.

Our Wednesday Intensive Math Intervention has been operating since the week of October 6<sup>th</sup>. All teachers, specialists and classified staff participate in providing students with targeted math interventions. We use some of our PLC time to review student progress and assessments in order to make changes in groups and skills taught. Kim Kunkel, has met with MV's instructional assistants on two occasions to provide them with training to help them work with small groups. She will be continuing this training throughout the year.

### **Taylor Mountain News**

Taylor Mountain has been working to implement an effective intervention plan. We continue to support students at a variety of levels in all curriculum areas, but

are currently providing homogeneous support two afternoons a week in math. All staff including myself teaches a math intervention group.

On October 20, our School Site Council met at the district with other Site Councils to get budget information. Having the opportunity to meet to get budget information early will assist us in planning for the year.

We also celebrated Red Ribbon Week. On Thursday night October 30 we sponsored our literacy night Bootiful Books. On Friday, October 31 we held our Halloween Parade.

Taylor Mountain PTA just completed their wrapping paper fundraiser. They raised approximately \$4,500 for school activities and students.

*Look for school updates in each issue...*