

# Spotlight on Success

## Superintendent's Message

# District API Growth Realized

The California Department of Education released the Annual Progress Report (APR) for all public school districts and for individual schools this morning. The overall API results show, that as a district, we made good progress. District-wide, our API increased 14 points from 677 to 691. Each of our significant subgroups made their growth targets. The growth shown for each subgroups was as follows: Hispanic, 18 pts; White, 7 pts; Socioeconomically Disadvantaged, 15 pts, EL, 17 pts, and Students with Disabilities, 83 pts.



While achievement across the district showed some gains, our AYP targets remain the same. District wide, each of our subgroups met their math targets. However, only the White subgroup met the English Language Arts (ELA) targets. Next year, the AYP targets increase dramatically. None of our subgroup scores would presently meet the new targets.

One area that showed excellent progress was our 4th grade writing scores. In 2006-

07, our average percent correct on the assessment was 46.08. The average percent correct improved to 55.79 for the 2007-08 school year.

STAR results for individual schools provided a range of news. Bellevue School scores increased dramatically. Their overall API score jumped 31 pts. From 671 in 2006-07 to 702 last spring. All of their subgroups met their API growth targets. In terms of AYP, the only Bellevue subgroup that did not meet their target was EL students in ELA.

Kawana STAR results showed an overall decline from the 2006-07 school year. Their API dropped 6 pts. and none of their subgroups met their growth targets. Under AYP, none of the Kawana subgroups met their targets. Meadow View's API remained the same. Their EL and Hispanic subgroups met their growth targets. Under AYP, Meadow View met their math targets, but not for ELA. Taylor Mountain needs another year before a growth report can be provided.

## Health and Wellness Festival Returns

The Second Annual South Santa Rosa Health and Wellness Festival will be held on Saturday, September 27th at Bellevue School. The Festival begins at 4:00 pm and continues until 7:00 pm. Shortly thereafter, the outdoor movie begins.

A number of volunteers are still needed to man booths, help with food preparation, and set-up and clean-up for the event. Each school has a volunteer coordinator. The district-wide volunteer coordinator is Bellevue teacher Suzanne Crotty.

Students, families, and staff will be treated to an ambitious celebration that includes a traditional carnival, sports-a-thons, community demonstrations, live music, and ends with an outdoor screening of a blockbuster movie title.

This year, the Festival's sports-a-thons will be held at individual school sites the week before the festival. Details will be forthcoming at each school.



*There was a lot of clowning around at last year's inaugural Wellness Festival!*

### Inside this issue:

District Coaches Corner	2
SR Chamber Teachers of the Year	2
School's Round-Up	2
2008-09 District Calendar	3
September/October Calendar	4

# District Curriculum Coaches Corner

---

Just like the classroom teachers, our goal is to improve student achievement. Coaching is a form of professional development based on a supportive, confidential, trusting relationship between the coach and classroom or specialist teacher. Coaching may be with individuals, small groups, or in workshops. Here are just a few examples: co-teaching a lesson, doing a model lesson, providing release time to observe a colleague, lesson study, or planning together around a challenge area such as Universal Access. We welcome your ideas!

This year the district's focus is on using Thinking Maps for improving students' comprehension skills. Another area of district focus is ELD time. One component we will explore together is building oral language skills using science and social studies content areas to engage students. We will continue to assist with Write From the Beginning and the use of ELLA strategies, which have already had a positive impact on our students' success.

Ellen Fryer will be working with the staffs of Bellevue and Taylor Mountain. Lonna Mulkey will be working with the staffs of Kawana and Meadow View.

You can reach us by putting a note in our boxes or using district e-mail. Please let us know how we can support you!

We are looking forward to working alongside you, learning from each other, and sharing the wealth of expertise we are so fortunate to have in our learning community.

Look for coaching and/or mentoring updates in each upcoming issue. If there are topics you would like to see addressed, please contact the district office or any of the coaches or mentors.

*-By Ellen Fryer and Lonna Mulkey  
District ELA Coaches*

---

## SR Chamber Honors BUSD Teachers

---

Four BUSD teachers were recently honored by the Santa Rosa Chamber of Commerce as our Teachers of the Year. The teachers were introduced at a breakfast function sponsored by the Chamber at the Flamingo Hotel on August 12.

Chosen for this honor were Carrie Boyce, 3rd grade at Bellevue School, Joan Boyce, 1st grade at Taylor Mountain School, Shirley Jenner, 5th grade at Meadow View School, and Martha Menth, 6th grade at Kawana School.

In addition to the honor, each teacher received a certificate, as well as a cash donation to support their work in the classroom.

The annual event honors teachers from across Santa Rosa in grades K-12 and at the college level.



*Carrie Boyce, Joan Boyce, Martha Menth, and Shirley Jenner are our SR Chamber Teachers of the Year. They were honored on August 12.*

---

## School's Round-up: What's Going on at our Campuses

---

### Bellevue Happenings

We welcomed a new SCOE Special Day Class to our campus. Teacher Nikki Lesard has done a marvelous job arranging her classroom to meet the needs of her students.

Our Cool School Program has begun with a Leadership Academy. This was a small group of students that was selected at the end of the last school year to work with the CalSERVES leadership team.

We are pleased to announce the receipt of a major grant that allows Bellevue to implement the Safe Schools Ambassadors program. The grant is from Peggy Sue's All America Cruise and other donors to Community Matters the parent company of Safe Schools Ambassadors. The program was developed to engage, equip and

empower young people to help prevent and stop mistreatment and cruelty among their peers.

Classified staff received some excellent training coordinated by CSEA. True Colors training allows staff to understand their personality traits as they perceive themselves and how others perceive them.

### Kawana Update

Before school started, the Kawana Community honored 6<sup>th</sup> Grade teacher Martha Menth at the SR Chamber of Commerce Breakfast held at the Flamingo. Kawana wants to welcome new Classified staff members Ms. Perez, Yard Supervisor, and certificated staff members, Ms. Boyle (2<sup>nd</sup> Gr.), Mr. Wilson (3<sup>rd</sup> Gr.) and Ms. Rogers-Zegarra (Reading Res.).

Kawana welcomed staff back to the site with a BBQ on Friday before the first staff meeting. Mr. Boyce and Mr. Wilson helped with grilling dogs, Bocca Burgers and kielbasa. (many thanks) Our Kindergarten Orientation went well. Parents attended with the new students and each of the 3 teachers reported how well the day went. Teachers completed initial assessments on all students, finishing on August 29<sup>th</sup>.

SRJC held a parent sign up for ESL instruction in the Kawana Cafeteria on August 20<sup>th</sup>. Classes started on the 25<sup>th</sup>. Kawana welcomes the two new pre school programs, the Redwood Consortium and 4C's.

*Con't on page 4*

# 2008-09 District Calendar Highlights Are Also on the Web-Site

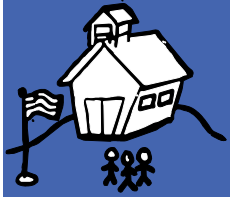
We have a new district web site, as well as new sites for each of the schools. These sites allow us greater flexibility to control and update content. One of the new features is a real time calendar for the district. This calendar may be accessed at anytime by our employees and parent community. Requests to have events included in the calendar are directed though Marie White in the district office. To access the calendar, go to [www.bellevueusd.org](http://www.bellevueusd.org) and click on the calendar heading. Below are listed some key district-wide dates.

<u>Committee Dates</u>	<u>PLC Dates</u>	<u>Professional Development</u>	<u>Other Key Dates</u>
8/25 Wellness	8/20 Writing/Teacher	9/8 BTSTA Year 2	9/10 Back to School Night
9/4 Steering	8/27 Writing/Site	9/15 BTSA Year 1	9/22-23 Parent Conferences
9/8 Wellness	9/3 Math Pre U1/Teacher	10/4 Buy Back Day #3	9/24-25 Parent Conferences
9/9 VAPA	9/17 ELA Inter/District	10/6 BTSA Year 2/Spec Ed	11/7 End of 1st Trimester
9/11 Intervention	9/24 ELD Groups/Teacher	10/13 BTSA Year 1	2/27 End of 2nd Trimester
9/18 Assessment	10/1 Math/Site	10/27 K Collaboration #1	3/4 STAR 4th Writing
9/24 Wellness	10/8 Math Pre U2/Teacher	10/28 1st Collaboration #1	4/20 - 5/1 STAR Testing
9/25 English Learner	10/15 Math Post U1/District	10/30 2nd Collaboration #1	5/13 Open House
10/2 Steering	10/22 Math/Teacher	11/3 BTSA Year 2	5/28 Last Day of School
10/3 Leadership	10/29 Math/Site	11/4 3rd Collaboration #1	
10/9 Intervention	11/5 Math/Teacher	11/6 4th Collaboration #1	<b><u>Board Meetings</u></b>
10/16 Assessment	11/12 TBA/District	11/7 5/6 Collaboration #1	7/17 Bellevue
10/23 English Learner	11/19 Math Pre U3/Teacher	11/17 BTSA Year 1	8/19 Kawana
10/30 Pro Development			9/16 Meadow View
11/6 Steering	12/3 Math Post U2/Site	12/1 BTSA Year 2	10/21 Bellevue
11/13 Intervention	12/10 TBA/Teacher	12/15 BTSA Year 1	11/18 Kawana
11/20 Assessment	12/17 TBA/District	1/12 BTSA Year 2/Spec Ed	12/16 Meadow View
12/4 Steering	1/7 TBA/Teacher	1/26 BTSA Year 1	1/20 Bellevue
12/11 Intervention	1/14 TBA/Site	1/29 K Collaboration #2	2/17 Kawana
12/18 Assessment	1/21 Math Pre U4/Teacher	1/30 1st Collaboration #2	3/17 Meadow View
1/8 Intervention	1/28 Math Post U3/District	2/2 2nd Collaboration #2	4/21 Bellevue
1/15 Assessment	2/4 TBA/Teacher	2/2 BTSA Year 2	5/19 Kawana
1/22 English Learner	2/11 TBA/Site	2/3 3rd Collaboration #2	6/16 Meadow View
1/27 Leadership	2/18 TBA/Teacher	2/5 4th Collaboration #2	
2/5 Steering	2/25 TBA/District	2/6 5/6 Collaboration #2	<b><u>DELAC</u></b>
2/12 Intervention	3/4 Math Pre U5/Teacher	2/23 BTSA Year 1	9/8 DELAC
2/19 Assessment	3/11 Math Post U4Site	3/2 BTSA Year 2	10/13 DELAC
2/26 English Learner	3/18 TBA/Teacher	3/23 BTSA Year 1	11/10 DELAC
3/5 Steering	4/1 TBA/Teacher	4/6 BTSA Year 2	1/12 DELAC
3/12 Intervention	4/8 TBA/District	4/20 BTSA Year 1	2/2 DELAC
3/19 Assessment	4/15 TBA/Teacher		4/13 DELAC
4/2 Steering	4/22 Math Pre U6/Site	5/4 K Collaboration #3	<b><u>GATE Advisory Com</u></b>
4/9 Intervention	4/29 Math Post U5Teacher	5/4 BTSA Year 2	10/7 GATE Advisory
4/16 Assessment	5/6 TBA/District	5/7 1st Collaboration #3	11/4 GATE Advisory
4/23 English Learner	5/20 TBA/Teacher	5/8 2nd Collaboration #3	1/13 GATE Advisory
4/30 Pro Development	5/28 TBA/Site	5/11 3rd Collaboration #3	2/3 GATE Advisory
5/7 Steering		5/11 BTSA Spec Ed	3/3 GATE Advisory
5/12 Leadership		5/14 4th Collaboration #3	4/7 GATE Advisory
5/14 Intervention		5/15 5/6 Collaboration #3	5/5 GATE Advisory
5/21 Assessment		5/18 BTSA Year 1	
		5/26 BTSA Colloquium	<b><u>Holidays</u></b>
			9/1 Labor Day
			11/11 Veteran's Day
			11/26-28 Thanksgiving
			12/23-1/2 Winter Break
			1/19 ML King Jr.
			2/9 Lincoln's Day
			2/16 President's Day
			3/23-27 Spring Break
			5/25 Memorial Day

## Coming Soon to the New District Web Site:

An Employee Only link to resources such as professional development, district forms, Board policies, and much, much more. Enter via the "Staff Room" link.

# September/October, 2008



## BELLEVUE UNION SCHOOL DISTRICT

3223 Primrose Avenue  
Santa Rosa, CA 95403  
707-542-5197

Bellevue School 707-542-5195  
Kawana School 707-545-4283  
Meadow View School 707-541-3715  
Taylor Mountain School 707-542-3671

### *Success for All*

Have a suggestion for a future article or feature? Please contact Marie White at the district office with your suggestions.

Wednesday, September 3  
Monday, September 8  
Wednesday, September 10  
Monday, September 15  
Tuesday, September 16  
Wednesday, September 17  
September 22, 23, 25, 26  
Wednesday, September 24  
Saturday, September 27  
Wednesday, October 1  
Saturday, October 4  
Tuesday, October 7  
Wednesday, October 8  
Monday, October 13  
Wednesday, October 15  
Tuesday, October 21  
Wednesday, October 22  
Monday, October 27  
Tuesday, October 28  
Wednesday, October 29  
Thursday, October 30

PLC: 2nd Hour is Teacher Directed  
DELAC, Kawana, 6:30 p.m.  
Back to School Night  
Wellness Committee, Bellevue, 3:30 p.m.  
Board Meeting, Meadow View, 7:00 p.m.  
PLC: 2nd Hour is District Directed  
Parent-Teacher Conferences  
PLC: 2nd Hour is Teacher Directed  
Health and Wellness Festival, 4:00 p.m.  
PLC: 2nd Hour is Site Directed  
Buy Back Day #3, TBA  
GATE Advisory, Bellevue, 7:00 p.m.  
PLC: 2nd Hour is Teacher Directed  
DELAC, Kawana, 6:30 p.m.  
PLC: 2nd Hour is District Directed  
Board Meeting, Bellevue, 7:00 p.m.  
PLC: 2nd Hour is Teacher Directed  
K Collaboration Day #1  
1st Grade Collaboration Day #1  
PLC: 2nd Hour is Site Directed  
2nd Grade Collaboration Day #1

## School Round-up: What's Going On...

*con't from page 2*

The Kawana PTA met over the summer, they will be heading an effort to raise funds for a new Kindergarten play area. Safe Routes to School held a parent meeting on Wednesday, August 27<sup>th</sup>. A helmet and bike safety assembly will follow.

Kawana opened with total of 367 students, 180 boys and 187 girls. Kawana Staff looks forward to a fruitful 2008/2009 school year.

### **What's New at Meadow View**

The opening day of school went very well. We opened school with 436 students and ended the first day with 448. We have one combination class - a 1/2. Most of our classes are filled to capacity. Due to the large number of Kindergarten students, we needed to open a new class.

CELDT testing, under the direction of Beth Power, proceeded very smoothly. We did not have any problems completing all testing by August 29<sup>th</sup>.

All teachers have started their initial assessments of students.

### **Taylor Mountain News**

Taylor Mountain School has a beautiful new third grade pod. The building was finished on time. A large number of Taylor Mountain teachers participated in the district buy back days on August. 12<sup>th</sup> and 13<sup>th</sup>, focusing on math pathways. Teachers are using math pathways to support strands of math curriculum throughout all grades. Teachers also participated in conversation regarding data in Professional Learning Communities at their first day back.

Taylor Mountain has six new staff members, Steven Thiele/third grade, Melinda Feinstein/Bilingual Resource, Katie Edson/4/5/6-SDC teacher, Erin Hartelt/RSP, Megan Thornton/4<sup>th</sup>/5<sup>th</sup> combo and Jennifer Boles/6<sup>th</sup> grade. Several of our existing teachers also changed grade levels- Tiffany Kampmann moved from 5<sup>th</sup> to 2<sup>nd</sup> grade, Jessica Archer moved from 3<sup>rd</sup> to

1<sup>st</sup> grade and Darcy Kantor moved from teaching the Special Day Class to a 1<sup>st</sup>/2<sup>nd</sup> combination class.

Enrollment at Taylor Mountain has been extensive. We enrolled 21 more Kindergartners than we have room for. We are also busing out students in 1<sup>st</sup> and 2<sup>nd</sup> grades.

There are many new activities for students and the Taylor Mountain families. This year SRJC is offering adult English classes with daycare for 3-7 year olds. We have a Sonoma Academy partnership on Wednesday for homework help along with the Imagine Bus North providing art lessons to 2-6 grade students. On Mondays, Circle of Sisters will be on campus offering 4<sup>th</sup> and 5<sup>th</sup> grade girls with fun group activities that include art, journaling, singing and acting. We are looking forward to our second year together building our school community.

*Look for school updates in each issue...*